

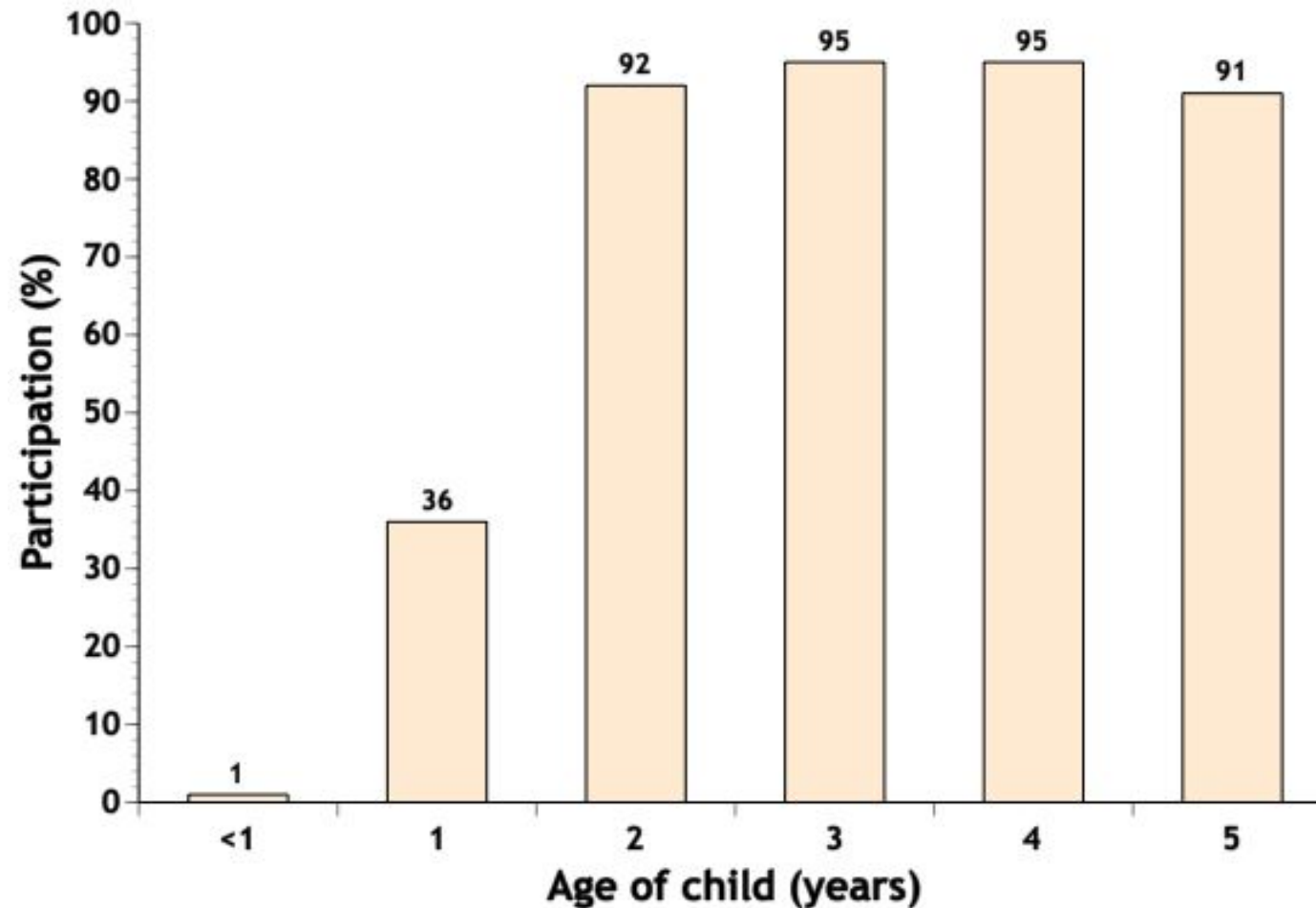


Annual Conference of ESSOP 2009  
*PREVENTION OF INFECTIOUS DISEASES IN CHILDREN:  
ROLE OF PRIMARY AND SOCIAL PAEDIATRICS*  
*September 30-October 2*  
*Habakuk, Maribor, Slovenia*

# Pre-school teachers' evaluation of the well-being, health and development of 5-6 years old children

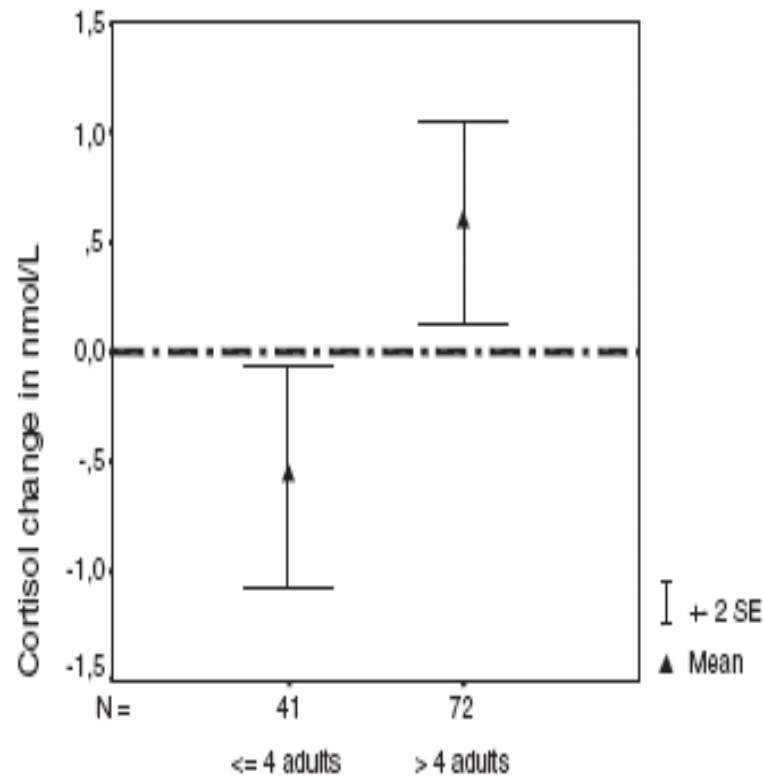
Geir Gunnlaugsson, MD, PhD, MPH  
Gudbjörg Vésteinsdóttir, MPH  
School of Health and Education  
Reykjavík University  
Iceland

# Participation in pre-schools Iceland 2008

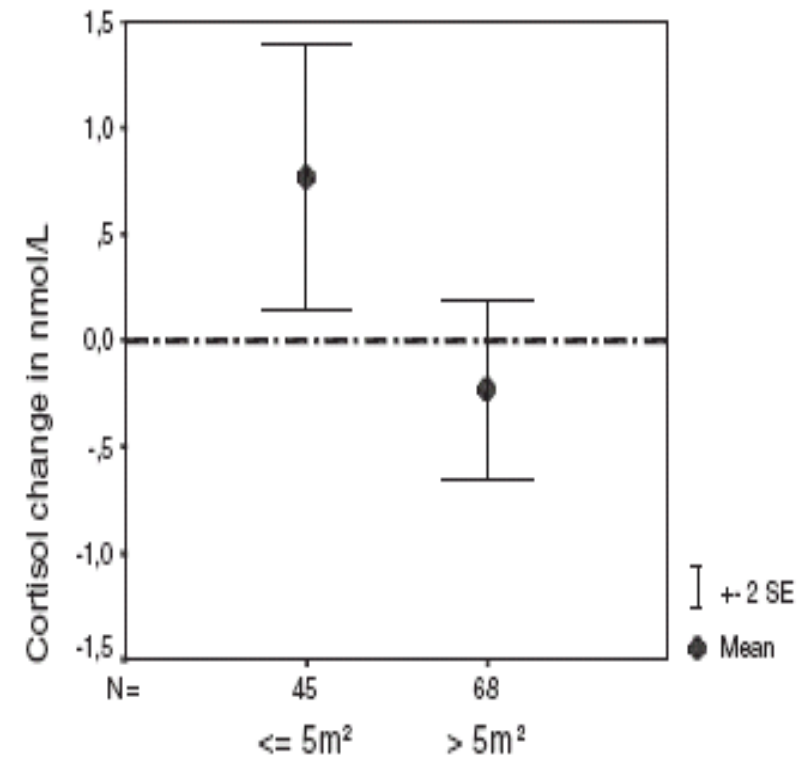


# Pre-school children Cortisol and external factors

## Pre-school teachers (n)



## Space (m<sup>2</sup>/child)



# Objectives

In the context of pre-schools in one municipality in the Greater Reykjavík Area

- Identify factors in the environment that influence health, development and well-being of the children; *and*
- construct a questionnaire that can be used nationally for such an evaluation

# Methodology

- **Questionnaire**

- Constructed on the basis of domestic and international experiences
- 71 items, e.g. related to health and well-being, cognitive and social development
- Filled out by 37 pre-school teachers

- **Participation**

- 15 out of 18 pre-schools in the municipality
- 327 out of 342 children (96%)

# Sociodemographic background

- **Family life**
  - Lives with both parents 80%
  - Single mother 11%
- **Parental education (male/female)**
  - Primary (M 12%; F 13%)
  - Secondary (M 35%; F 26%)
  - University (M 29%; F 41%)
  - Not known (M 24%; F 20%)

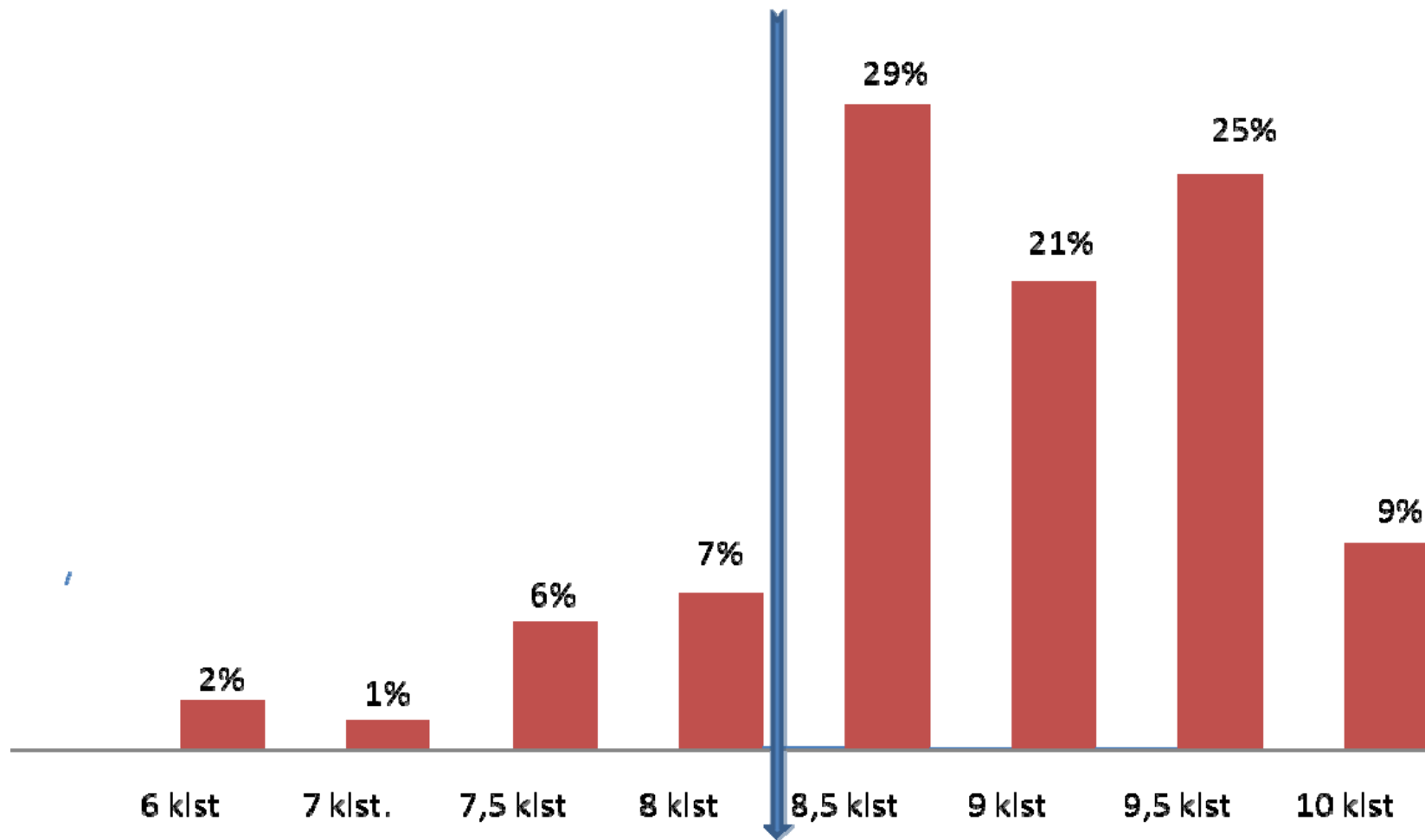
# Pre-school characteristics

## Pre-school areas

	A	B	C	D	E	F
Staff per play group (n; 3-8)	4,5	5,5	5,5	6,5	5	4
Accredited teachers (n)	2	3	2,8	3,5	2	1,5
Registered stay (hours/d)	8	9	8	8	8	8,5
Children in play-group (n; 15-36)	23,5	26,5	28	28	22	17

# Length of stay

5-6 year old Icelandic preschool children

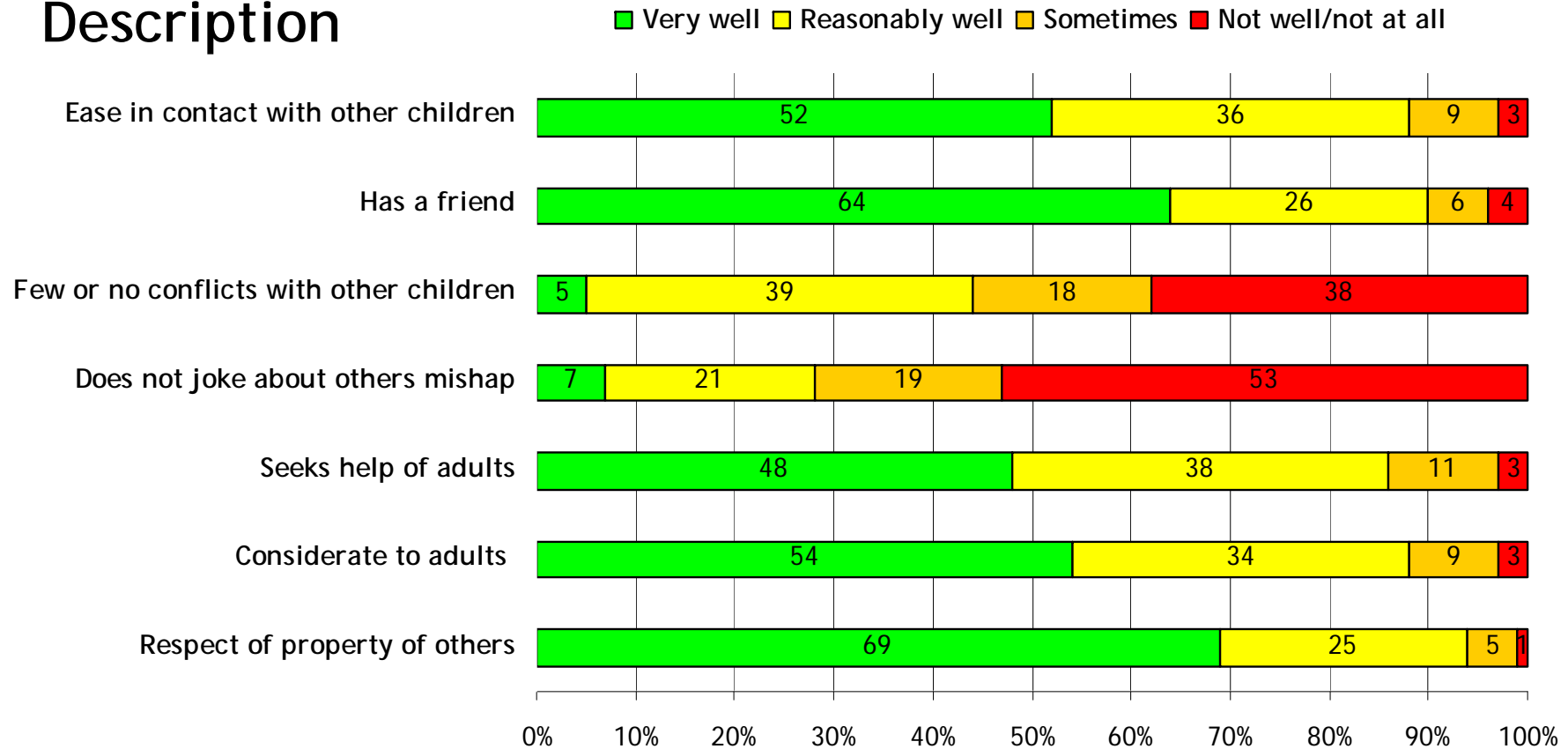


Mean duration of stay (8.3 hours)

# Social competency

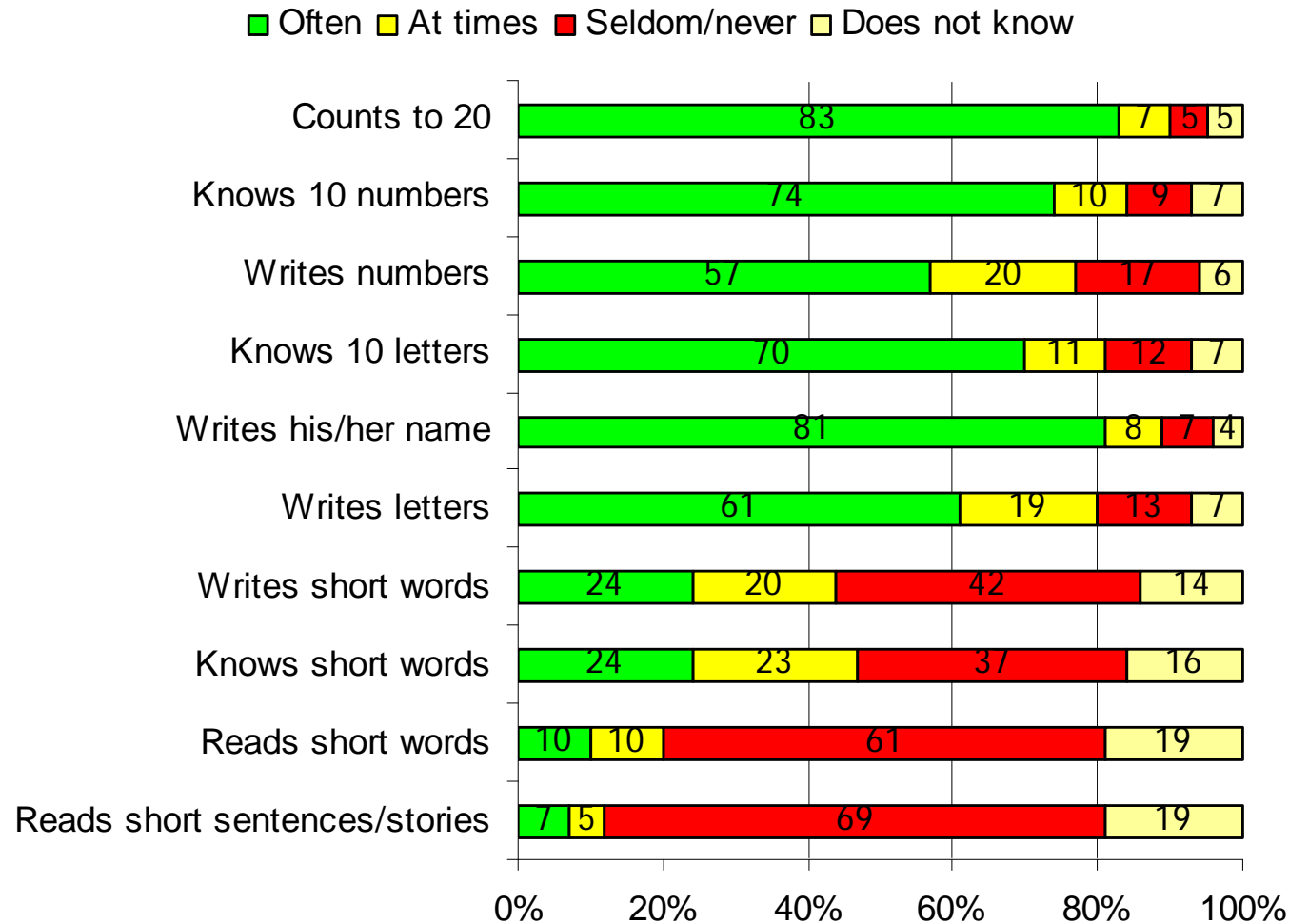
## 5-6 year old preschool Icelandic children

### Description



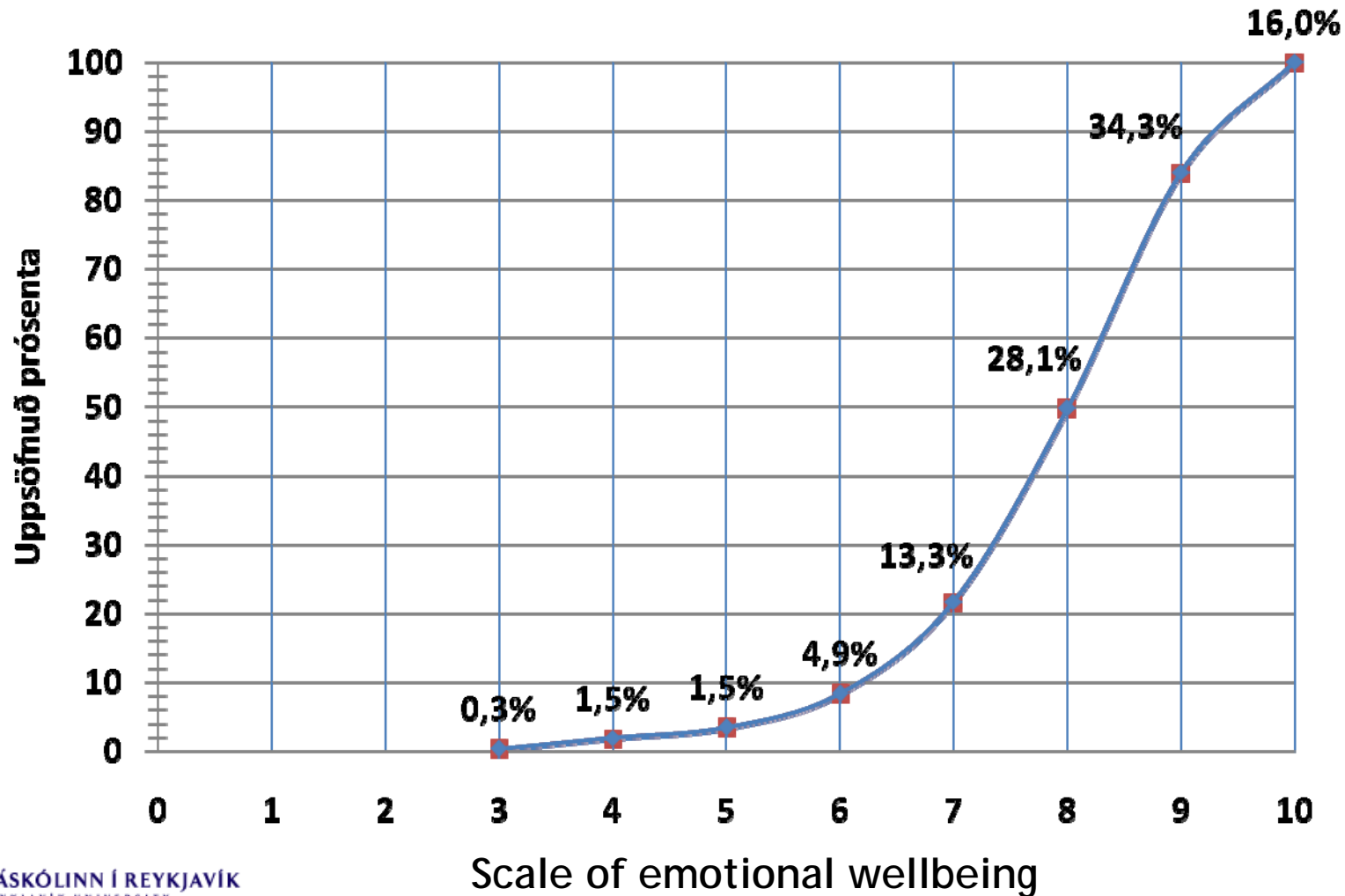
# Cognitive development

## 5-6 year old Icelandic preschool children



# Emotional wellbeing

## 5-6 year old Icelandic preschool children



# Influential factors on well-being

## 5-6 year old Icelandic preschool children

- **Length of stay**
  - Short
    - More insecurity
  - Long
    - More tiredness in the morning
    - Less energy during the day
    - Less social competency, difficult to sit calm and conflict with other children
- **Large play groups**
  - Children more tired
  - Less contact with staff
  - Seek less to staff or ask for help
  - Emotional well-being worse
- **Number of staff**
  - More stress
  - Emotional wellbeing worse

# Conclusions

- Health and well-being of the pre-school children considered good
- Negative impact of the length of stay and many different pre-school teachers with the children
- The questionnaire can be adapted to be used on a national level

